

# Purdue University Graduate School IUPUI Enrollment Summary Fall Semester 2015-16

updated 11-03-15

**Total 2015-16 Fall Enrollment: 824**

### Students by Classification

	<u>Number</u>	<u>% of Total</u>
Doctoral ^	219	26.6%
Master's	603	73.2%
Grad Certificates	<u>2</u>	<u>0.2%</u>
<b>GRAND TOTAL</b>	<b>824</b>	<b>100.0%</b>

^ Does not include PhD Biomedical Engineering students as they are included in the West Lafayette count.

### Ethnic Domestic Enrollment +

	<u>Number</u>	<u>% of Dom.</u>
African American	23	6.9%
American Indian or Alaskan Native	1	0.3%
Asian American	33	9.9%
Hispanic/Latino	13	3.9%
Native Hawaiian/Pacific Islander	0	0.0%
Not Applicable	3	0.9%
2 or more races	1	0.3%
Undisclosed	<u>2</u>	<u>0.6%</u>
<b>Total Enrolled</b>	<b>76</b>	<b>22.8%</b>

+ Not all students shared this information.

### Gender

	<u>Number</u>	<u>% of Total</u>
Men	555	67.4%
Women	<u>269</u>	<u>32.6%</u>
<b>Total Enrolled</b>	<b>824</b>	<b>100.0%</b>

### Indiana Resident Status

	<u>Number</u>	<u>% of Total</u>
Indiana Resident	291	35.3%
Nonresident	<u>533</u>	<u>64.7%</u>
<b>Total Enrolled</b>	<b>824</b>	<b>100.0%</b>

### New/Continuing Students

	<u>Number</u>	<u>% of Total</u>
New	258	31.3%
Continuing	<u>566</u>	<u>68.7%</u>
<b>Total Enrolled</b>	<b>824</b>	<b>100.0%</b>

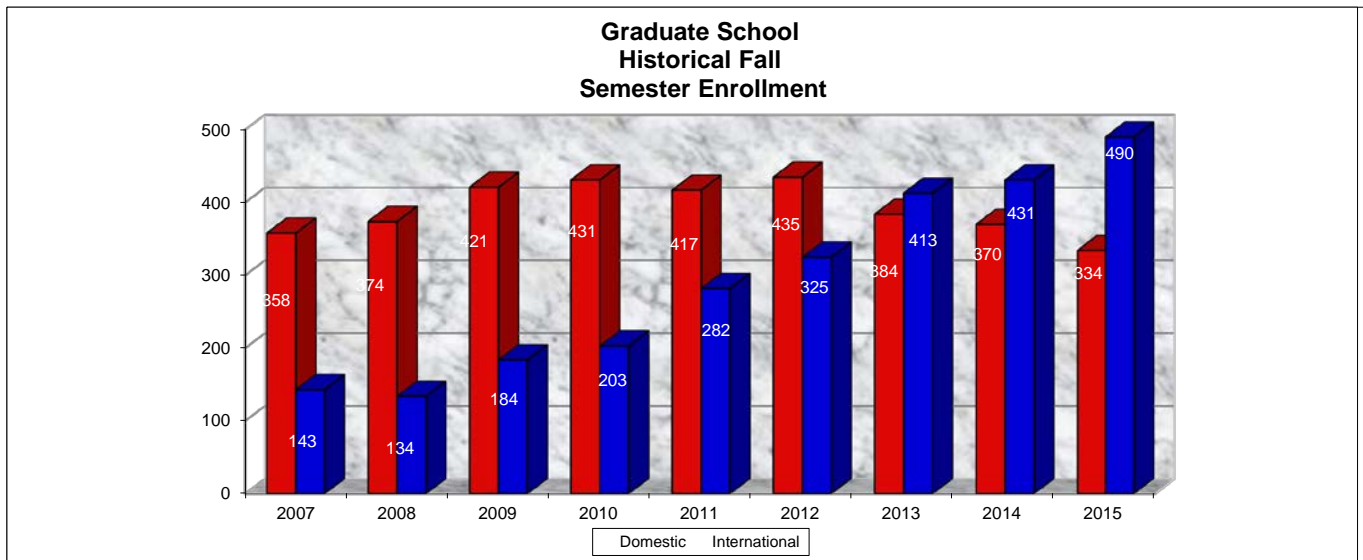
### International Students\*

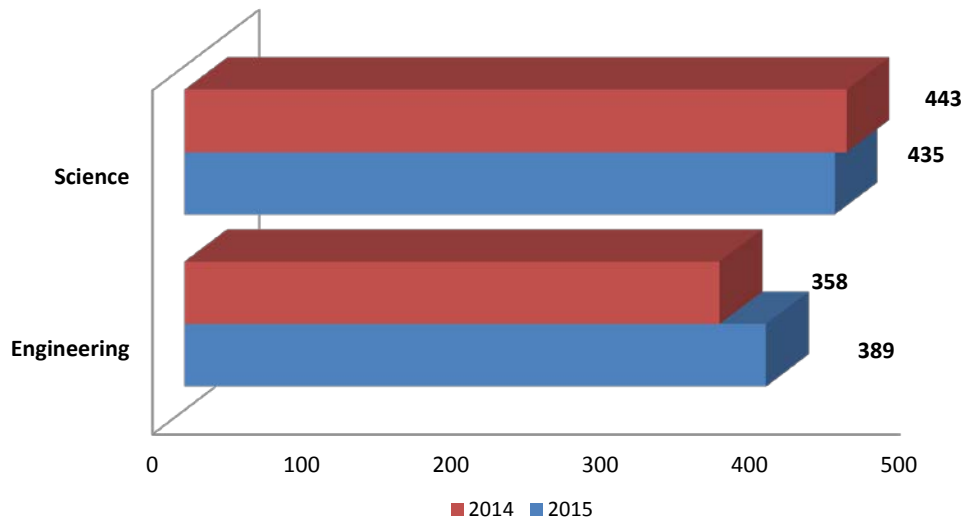
	<u>Number</u>	<u>% of Total</u>
New	141	28.8%
Continuing	<u>349</u>	<u>71.2%</u>
<b>Total Enrolled</b>	<b>490</b>	<b>100.0%</b>

\*Residence is determined by Citizenship

### Domestic Students\*

	<u>Number</u>	<u>% of Total</u>
New	115	34.4%
Continuing	<u>219</u>	<u>65.6%</u>
<b>Total Enrolled</b>	<b>334</b>	<b>100.0%</b>





### Comparative Enrollment Data By School -- Fall 2014-15 and 2015-16

	2014	% of Total	2015	% of Total
Engineering <sup>^</sup>	358	44.7%	389	47.2%
Science	443	55.3%	435	52.8%
<b>Total Enrollment</b>	<b>801</b>	<b>100.0%</b>	<b>824</b>	<b>100.0%</b>

<sup>^</sup> Does not include PhD Biomedical Engineering students as they are included in the West Lafayette count.

### Comparative Enrollment Data -- 2014-15 and 2015-16

	2014-15	% of Total	2015-16	% of Total
Indiana Resident	334	41.7%	291	35.3%
Nonresident	467	58.3%	533	64.7%
<b>Total Enrollment</b>	<b>801</b>	<b>100.0%</b>	<b>824</b>	<b>100.0%</b>

<b>Ethnic Enrollment +</b>	2014-15	% of Domestic	2015-16	% of Domestic
American Indian or Alaskan Native	1	0.3%	1	0.3%
Asian	25	6.8%	33	9.9%
Black or African American	23	6.2%	23	6.9%
Hispanic/Latino	13	3.5%	13	3.9%
Native Hawaiian/Pacific Islander	1	0.3%	0	0.0%
2 or more races	1	0.3%	1	0.3%
Not applicable			3	0.9%
Undisclosed			2	0.6%
<b>Total Enrollment</b>	<b>64</b>	<b>16.2%</b>	<b>76</b>	<b>22.8%</b>

+ Not all students shared this information.

<b>International* Students</b>	2014-15	% of Total	2015-16	% of Total
Graduate	431	53.8%	490	59.5%

\*Residence is determined by Citizenship

<b>Gender</b>	2014-15	% of Total	2015-16	% of Total
Total Men	531	66.3%	555	67.4%
Total Women	270	33.7%	269	32.6%
<b>Total Enrollment</b>	<b>801</b>	<b>100.0%</b>	<b>824</b>	<b>100.0%</b>

## Comparative Enrollment Data -- 2014-2015 to 2015-2016

Department	2014-15	% of Total	2015-16	% of Total	% Change
<b>SCHOOL OF SCIENCE</b>					
BIOLOGY	93	11.61%	89	10.80%	-4.30%
CHEMISTRY	29	3.6%	27	3.3%	-6.90%
COMPUTER & INFORMATION SCIENCE	157	19.60%	148	17.96%	-5.73%
FORENSIC & INVESTIGATIVE SCIENCE	4	0.50%	10	1.21%	150.00%
MATHEMATICS	78	9.74%	82	9.95%	5.13%
PHYSICS	22	2.75%	23	2.79%	4.55%
PSYCHOLOGY	60	7.49%	56	6.80%	-6.67%
<b>SCHOOL OF SCIENCE TOTAL</b>	<b>443</b>	<b>55.31%</b>	<b>435</b>	<b>52.79%</b>	<b>-1.81%</b>
<b>SCHOOL OF ENGINEERING</b>					
BIOMEDICAL ENGINEERING	21	2.62%	23	2.79%	9.52%
ELECTRICAL AND COMPUTER ENGINEERING	138	17.23%	153	18.57%	10.87%
FACILITIES MANAGEMENT *	N/A	N/A	N/A	N/A	N/A
MECHANICAL ENGINEERING	119	14.86%	153	18.57%	28.57%
TECHNOLOGY	80	9.99%	60	7.28%	-25.00%
OTHER/UNSPECIFIED	N/A	N/A	N/A	N/A	N/A
<b>SCHOOL OF ENGINEERING TOTAL</b>	<b>358</b>	<b>44.69%</b>	<b>389</b>	<b>47.21%</b>	<b>8.66%</b>
<b>TOTAL ENROLLMENT</b>	<b>801</b>	<b>100.00%</b>	<b>824</b>	<b>100.00%</b>	

\* Facilities Management is not a Master's degree program; it is an area of concentration within the M.S. degree program in M.S. technology, and is the only area of study that is delivered completely online. The counts for Facilities Management are included in the Technology column.