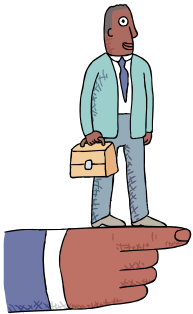


Faculty Advisor Responsibilities



PURDUE
UNIVERSITY

Guiding Standards for Expectations of Those Advising and Mentoring Graduate Students and Post Doctoral Scholars at Purdue University

Advising Post Doctoral Scholars and Graduate Students

- A graduate faculty member is expected to advise a post doctoral scholar/graduate student carefully and thoughtfully.
- The faculty advisor acts as the mentor and helps shape the trainees's understanding of research.
- Before entering a post doc or student-advisor relationship, the advisor and postdoc/graduate student should consider their mutual interests; the compatibility of their expectations, work habits, personalities; the career and research goals.
- Graduate faculty should establish and communicate clear expectations regarding graduate student commitment and effort to be devoted to the student's graduate program or post doctoral research.
- Graduate faculty members are responsible for all phases of graduate education and will be accessible to students who are under their guidance.
- Graduate faculty will foster the development of excellence in every graduate student and post doctoral scholar.
- Graduate faculty will be objective in the evaluation of research and academic performance and will communicate that evaluation fully and honestly to their trainees.
- Graduate faculty will report accurately on the competence of students to other

professionals who require such evaluations.

Guiding Research

- The goal of research and scholarship is the discovery of knowledge.
- Early in a postdoc/graduate student's tenure, the advisor should make the trainee aware of University and departmental policies regarding the conduct of research and rights to data and intellectual property developed in the course of their research.
- Also critical is ensuring that the postdoc/ student understands his or her advisor's policies and procedures governing authorship and publication of research results.
- For a student pursuing a research based graduate degree, it is the advisor's responsibility to guide the student through the student's first research experience and to constructively critique the research accomplishments.
- In relations with all graduate students, graduate faculty will be candid, fair, and committed to the student's welfare and progress.
- Integrity in research is an essential part of Purdue University's intellectual and social structure, and adherence to its spirit and principles is required. These principles include commitment to truth, objectivity, fairness, honesty, and free inquiry.

Teaching and Modeling Responsible Behavior

- Graduate faculty will advise trainee concerning, ethics of the profession, encourage the practice of scholarship and publication, and guide the students' ethical and responsible conduct in research.

- When engaged in teaching, research, or supervision, graduate faculty will recognize the power and influence they hold and avoid engaging in conduct that exploits or demeans students/post docs or that could be construed as an abuse of that power.
- The graduate advisor has the responsibility to discuss career opportunities with the student/postdoc and particularly after the student has completed his or her immediate degree objective.
- Graduate faculty must not condone nor tolerate discrimination against any individual on the basis of race, religion, color, sex, age, national origin or ancestry, marital status, parental status, sexual orientation, disability, or status as a disabled or a Vietnam veteran.
- Graduate faculty will strive to enhance the educational value of student assignments/experiences as teaching and research assistants.
- Graduate faculty will not permit personal or intellectual differences with colleagues to impede student access to those colleagues or interfere with students' research or progress toward a degree objective.
- Graduate faculty have a responsibility:
 - (i) to serve as exemplars in recognizing and acknowledging the scholarly contributions of others
 - (ii) in providing complete and accurate records and reports of the results and conclusions of their research, scholarly, or artistic endeavors
 - (iii) in preserving the integrity of the research record.
- Graduate faculty has special obligations to exemplify the best qualities and highest standards of personal and professional conduct.

<http://www.purdue.edu/Purdue/Integrity/index.htm/>

Purdue's Responsible Conduct of Research

<http://www.gradschool.purdue.edu/rcr/>

Purdue's Policies and Procedures of Integrity in Research

http://www.purdue.edu/policies/pages/teach_res_out_reach/viii_3_1.html

*This brochure is adapted from The RCR Booklet, Graduate School, Purdue University
http://www.gradschool.purdue.edu/rcr/workshop_files/ResponsibleConductofResearchBooklet191208.pdf

Contact

Gita N. Ramaswamy
 Associate Dean
 Graduate School
 Young Hall, Room 165
 155 S. Grant Street
 West Lafayette, IN 47907
 Phone: (765) 496-1969
gita@purdue.edu

Thomas W. Atkinson
 Associate Dean
Graduate School Ombudsman
 Phone: (765) 494-0245
takinson@purdue.edu